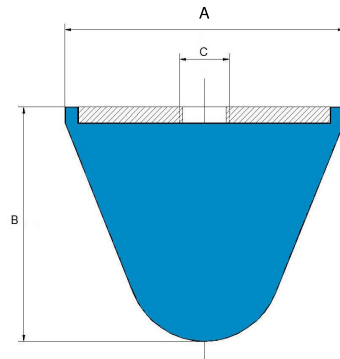
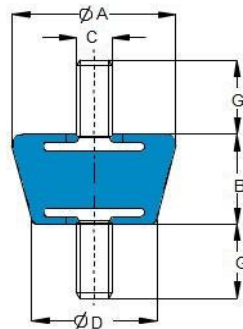


**TOPE CONICO
HEMBRA**



Ref.	A mm	B mm	C mm	Carga Máx. Kg Compresión
938114	20	20	M6	70
938115	25	20	M8	100
938116	30	30	M6	150
938117	30	30	M8	150
938118	50	48	M10	380
938119	70	60	M12	550
938120	90	94	M16	1100
938121	95	82	M16	1100



Ref.	A mm	D mm	B mm	C mm	G mm	Carga Máx. Kg Compresión	Flecha mm Compresión
940169	32	22	19	M6	15	40	4
940170	38	28	22	M8	20	100	5
938122	40	30	23	M8	16	30	-
941171	45	32	30	M8	20	115	6
938123	50	40	34	M8	18	60	-